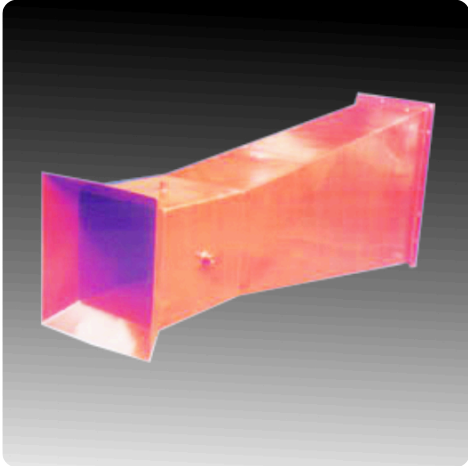




An iso 9001:2015 Company

# Intake Cone



## Intake Cone

Intake Cone has application for measurement of airflow of Compressors and Exhausters, FD fans, etc. When installation of flow element on the discharge side is not possible due to straight length unavailability, Intake Cone can be used efficiently in such application. Intake Cone is fabricated to suit the fan inlet dimensions. They can be designed for circular, square, rectangular or any shape of inlet of the FD fan or Compressor. They can have end flanges for mounting or can directly be butt welded to the pipe/duct.

## Technical Specifications

<b>Inlet Sizes</b>	100 mm to Any Size
<b>Intake Cone material</b>	Carbon Steel, Stainless Steel, Alloy Steel, Hastelloy, Titanium, Monel
<b>Mounting type, conns</b>	Flange or Butt Weld
<b>Applications</b>	Air